

2021
GEOGRAPHY (Honours)
Sixth Paper
(Practical)
[New Syllabus]

Full Marks: 50

Time: Four Hours

The figures in the margin indicate full marks

1. Point out any four characteristics of identification (macroscopically) of the following rocks and minerals. 5X2=10

Chalcopyrite; Pegmatite; Phyllite; Laterite; Shale

2. The following table shows the marks in geography obtain by the students in an Examination.

49	89	60	28	57	44	59	81	67	37
55	98	41	68	85	77	81	35	42	69
40	79	51	48	64	34	83	77	52	71
89	58	65	95	54	69	61	22	79	49
65	70	61	32	68	75	56	76	62	73
78	31	80	53	49	82	21	46	91	58

- a) Prepare a cumulative frequency distribution table based on the given data. 4
- b) Draw Ogive and show how many students score more than 75 marks in geography and how many students obtain less than 34 marks of that subject? 4+2
3. The classification of town according to size class in India (2011 Census) are given in the following table.

Type of town	Population	No. of Town
I	100000 and above	468
II	50000-99999	474
III	20000-49999	1373
IV	10000-19999	1683
V	5000-9999	1749
VI	Less than 5000	424

- a) From the given data prove that "Median= $Q_1=D_3=P_{50}$ " 4X2=8
 b) In what situation, the use of Median is more suitable than Mean and Mode and why? 2

4. The following table shows time duration in study and respective performance in the Examination of some student.

Duration of study (Hour/day)	2	3	4	5	6	8	10	12	14	16
Performance in the Exam (Marks in %)	30	35	40	50	60	70	80	90	96	99

Calculate the Pearson's Correlation Coefficient and test the Significance 5+2=7

5. The following table shows the temperature in various altitudes from the surface of the Earth.

Altitude (km)	Temperature (°C)
0	20
5	-12
10	-45
12	-60
20	-53
30	-38
40	-18
50	2
60	-26
80	-87

- a) Construct a Regression Equation (Y on X) from the given data. 6
 b) Find out the Normal Laps Rate of temperature (from the given data). 1
 c) What will be the estimate temperature at the altitude of 100 km? 1
 d) Make a brief comparison between correlation and regression. 2
6. Laboratory Note Book 3

UGB P-III (1+1+1) H/ Pr/ 2020 (N)

2020

Geography (H)

Seventh Paper

(Practical)

(New Syllabus)

Full Marks: 50

Time: Four Hours

The figures in the margin indicate full marks.

1. What is data? Write a short note on types of data. 1+3=4
2. Differentiate between primary and secondary data. Write a brief note on the method of primary data collection. 3+3=6
3. Draw a climograph (after Taylor) on the basis of the following data and identify the climatic types. 8+2=10

Month	Wet-bulb temperature ($^{\circ}$ F)	Relative humidity (%)
January	65.0	20
February	69.5	24
March	72.5	22
April	80.1	22
May	83.6	21
June	85.5	28
July	80.5	35
August	80.4	40
September	79.6	42
October	76.5	36
November	68.2	28
December	66.5	26

4. Who first used the term "Rank size rule"? What are the segments of the hydrograph? Which places of Hoogly district are more suitable for the crop

UGB P-III (1+1+1) H/ Pr/ 2020 (N)
2020

Geography (H)
Seventh Paper
(Practical)
(New Syllabus)

combination (Weaver method) for the following areas (in hectare) under different crop. 1+2+7=10

Sl. No	C.D. Block	Rice	Jute	Wheat	Potato	Oilseeds	Total crop area in ha
1	Chinsura-magra	5140.0	130	2.4	430	90.3	5792.7
2	Singur	16350.0	1790	4.5	5290	2220.0	25654.5
3	Khanakul II	12520.0	3110	10.0	2240	3280.0	21160.0

5. What is true dip and apparent dip? Interpret the given geological map with help of the given geological section. 3+8+4=15
6. Lab notebook and viva voice. 5

UGB P-III (1+1+1) H/ Pr/ 2020 (N)

2020

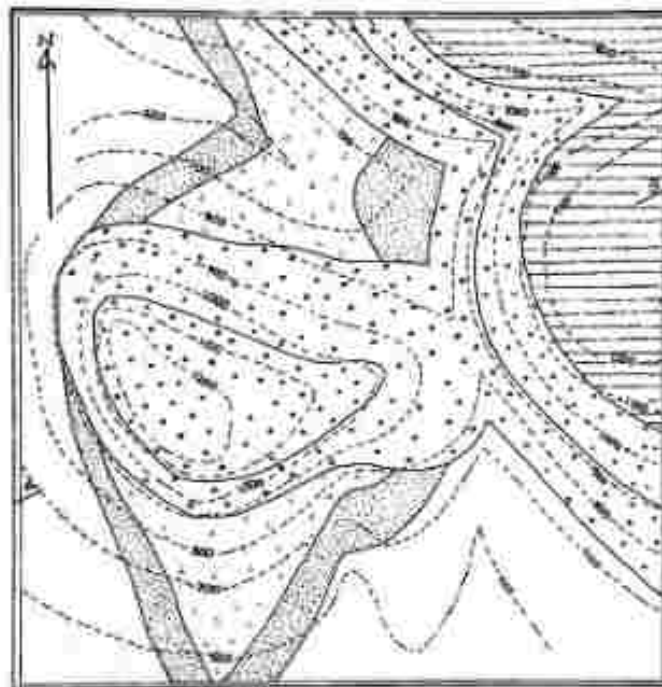
Geography (H)

Seventh Paper

(Practical)

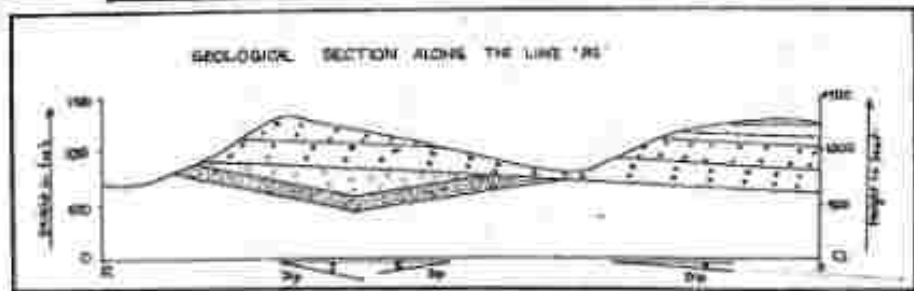
(New Syllabus)

GEOLOGICAL MAP



INDEX

CARBONIFEROUS	
	Limestone A-shale
	Lime shale
	Conglomerate
Sedimentary	
	Sand
	Silt
	Shale



UGB P-III (1+1+1) H/ Pr/ 2021 (N)

2021

Geography (H)

Eighth Paper

(Practical)

(New Syllabus)

Full Marks: 50

Time: Four Hours

The figures in the margin indicate full marks.

Group-A

1. (I) Define of remote sensing and give examples 2
- (II) What is the difference between Sun-synchronous and geostationary orbit? 2
- (III) What is atmospheric window and mention its importance in remote sensing? 2
- (IV) What are the advantages of vector data over raster data? 2
- (V) What is LISS-III? 2
- (VI) What do you mean by GIS? 2
- (VII) What are the important applications of GIS? 3

Group-B

2. (I) What were the objectives of your fieldwork? 3
- (II) What did you find out the impacts of metalled roads on rural life? 5
- (III) What are the steps of preparing a filed report? 5
- (IV) Why is sampling necessary for any geographic research? 2
- (V) What do you mean by the pilot survey? Why is it necessary? 4
- (VI) What were the limitations of your fieldwork? 3
- (VII) Write in short your in-field experience during household survey. 3
- (VIII) Field Report 5
3. Laboratory notebook. 5

Submit your answer to the link: <https://forms.gle/33CDxTdG1UwqoXNY6>

UGB P-III (1+1+1) H/ Pr/ 2021 (N)

2020

Geography (H)

Nineth Paper

(Practical)

(New Syllabus)

Full Marks: 50

Time: Four Hours

The figures in the margin indicate full marks.

1. (I) Mention the functioning of maximum minimum thermometer 2
(II) What is the relationship between depression of Dry and wet bulb temperature and humidity? 1
(III) How do you measure the atmospheric pressure by Fortin barometer? 2
2. (I) What is NLM? 1
(II) Bring out salient features of monsoon over India. 3
(III) Draw the isobaric pattern representing low pressure trough and wedge. 2
(IV) Identify the season of the given Indian daily weather map. 3
(V) What do you mean by IST 1730 and GMT 1200 Hours? 1
3. (I) Write three advantages of aerial photograph over traditional photographs? Define mirror stereoscope. What is mirror stereoscope used for? 3+1+1 = 5
(II) Define grayscale imagery. What would be the colour of vegetation, water body, and built-up land in FCC satellite imagery? Why FCC is needed for visual image interpretation. 1+2+2 = 5
4. (I) What do you mean by georeferencing? What is a vector data structure? Write some characteristics of vector dataset. 2+1+2 = 5
(II) Name some of the software for spatial mapping using attribute datasets. What are the key components of a thematic map? What are advantages of GIS software's over typical AutoCAD software's? 1+2+2 = 5
5. (I) Define spreadsheet. How correlation coefficient portray relationship between two variables discuss with example. Name the excel formula for percentile calculation with example. 1+2+2 = 5
(II) What is "cell" in MS excel? Write some characteristics of MS excel? What are the central tendencies can be done in MS excel write with examples? 1+2+2 = 5
6. Laboratory notebook. 5

Google form link for paper submission: <https://forms.gle/wsQu6igdPAXXM6qu8>

UGB P-III (1+1+1) H/ Pr/ 2021(N)

2020

Geography (H)

Nineth Paper

(Practical)

(New Syllabus)

