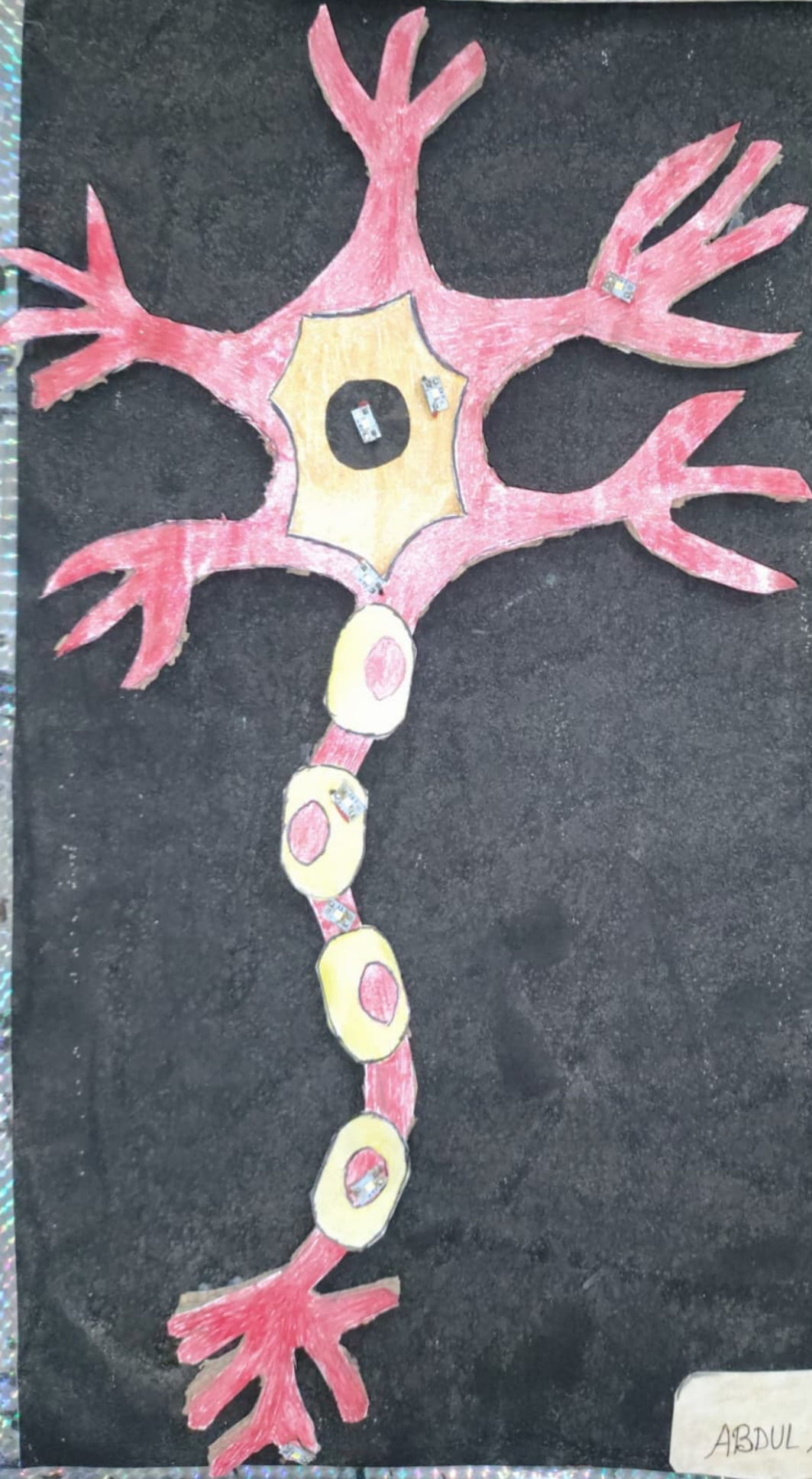


NEURON WORKING MODEL



DENDRITE

CELL BODY

NUCLEUS

AXON

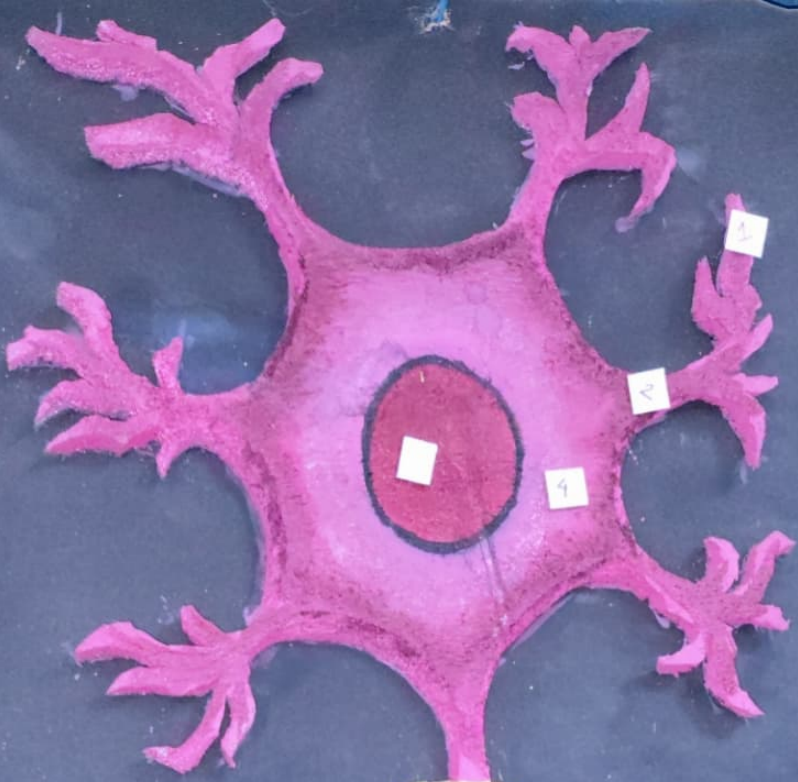
MYELIN SHEATH

NODE OF RANVIER

SCHWANN CELL

AXON TERMINAL

ABDUL ALIM AN



THE CELL
The cell is the basic unit of life. It is the smallest unit of an organism that can perform all the functions of life. The cell is made up of various organelles that work together to carry out the cell's functions. The cell membrane is the outer boundary of the cell, and it controls the movement of substances in and out of the cell. The nucleus is the control center of the cell, and it contains the genetic material. The cytoplasm is the fluid inside the cell, and it contains various organelles such as mitochondria, ribosomes, and endoplasmic reticulum. The cell is constantly changing and growing, and it is essential for the survival of the organism.

Superior
Vena cava

Aorta

Mitral
valve

Pulmonary
artery...

Pulmonary
vein

Tricuspid
valve

Right
atrium...

Left
atrium

Aortic
valve

Pulmonary
valve

Left
ventricle

Right
ventricle

Inferior
Vena cava



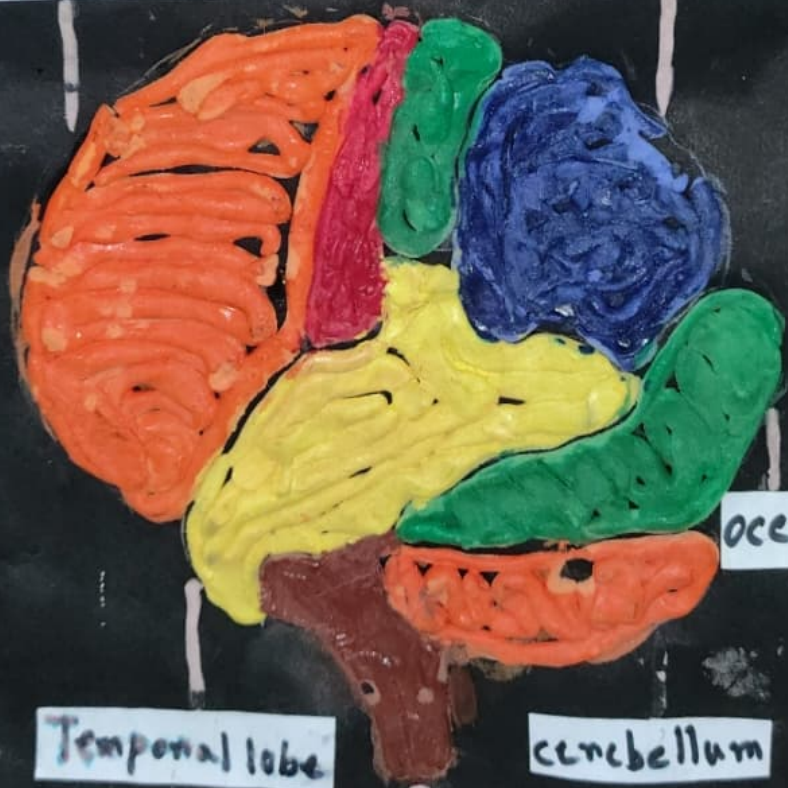
HUMAN CELL



Parts of the human brain

Frontal lobe

Parietal lobe



occipital lobe

Temporal lobe

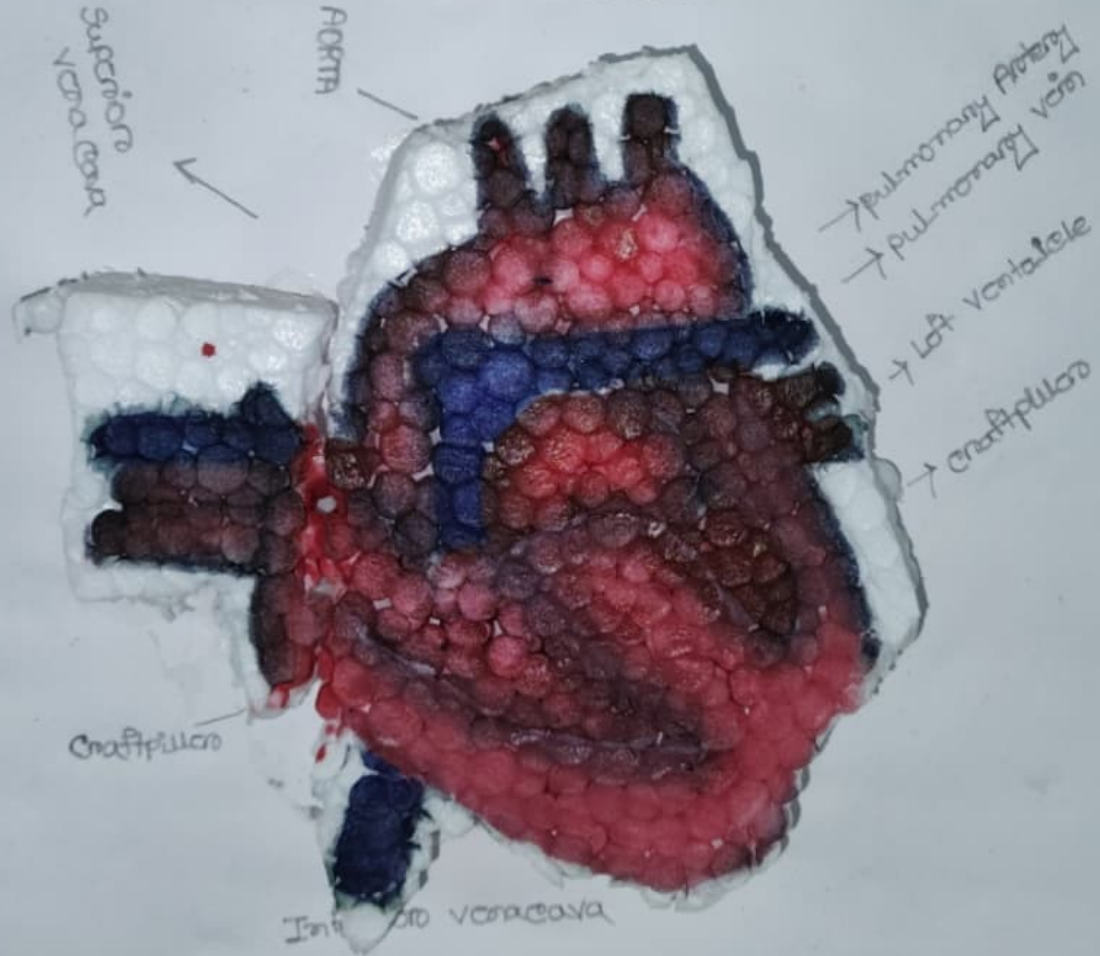
cerebellum

Spinal cord

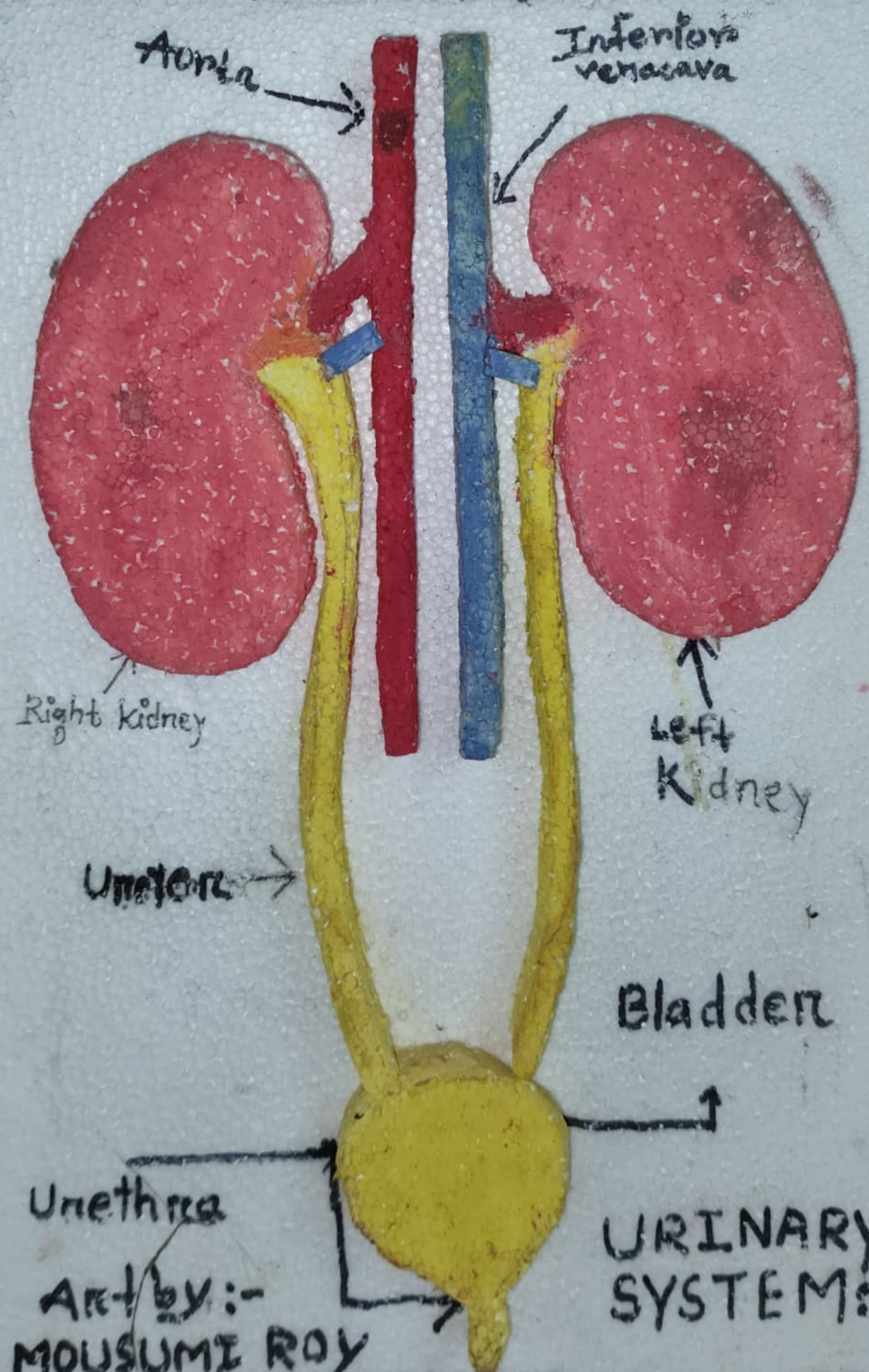
Fig. PROKARYOTIC CELL



HEART DIAGRAM



Art by
Ashmita Saha
1st Semester
2025-2026



Aorta

Inferior vena cava

Right kidney

Left kidney

Ureter

Bladder

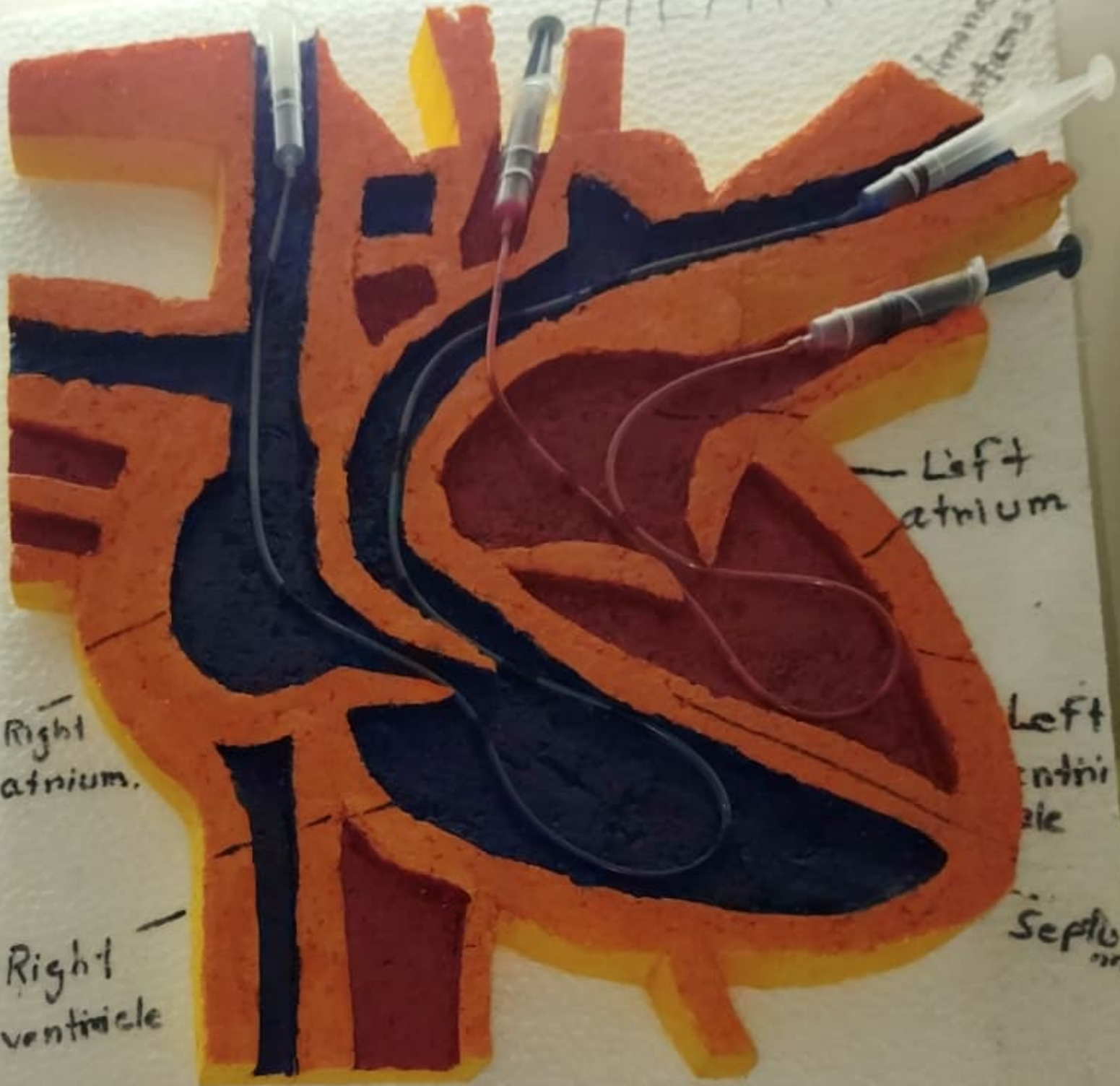
Urethra

URINARY SYSTEM:-

Art by:-
MOUSUMI ROY

HEART

Immunology
infusions



Right atrium.

Right ventricle

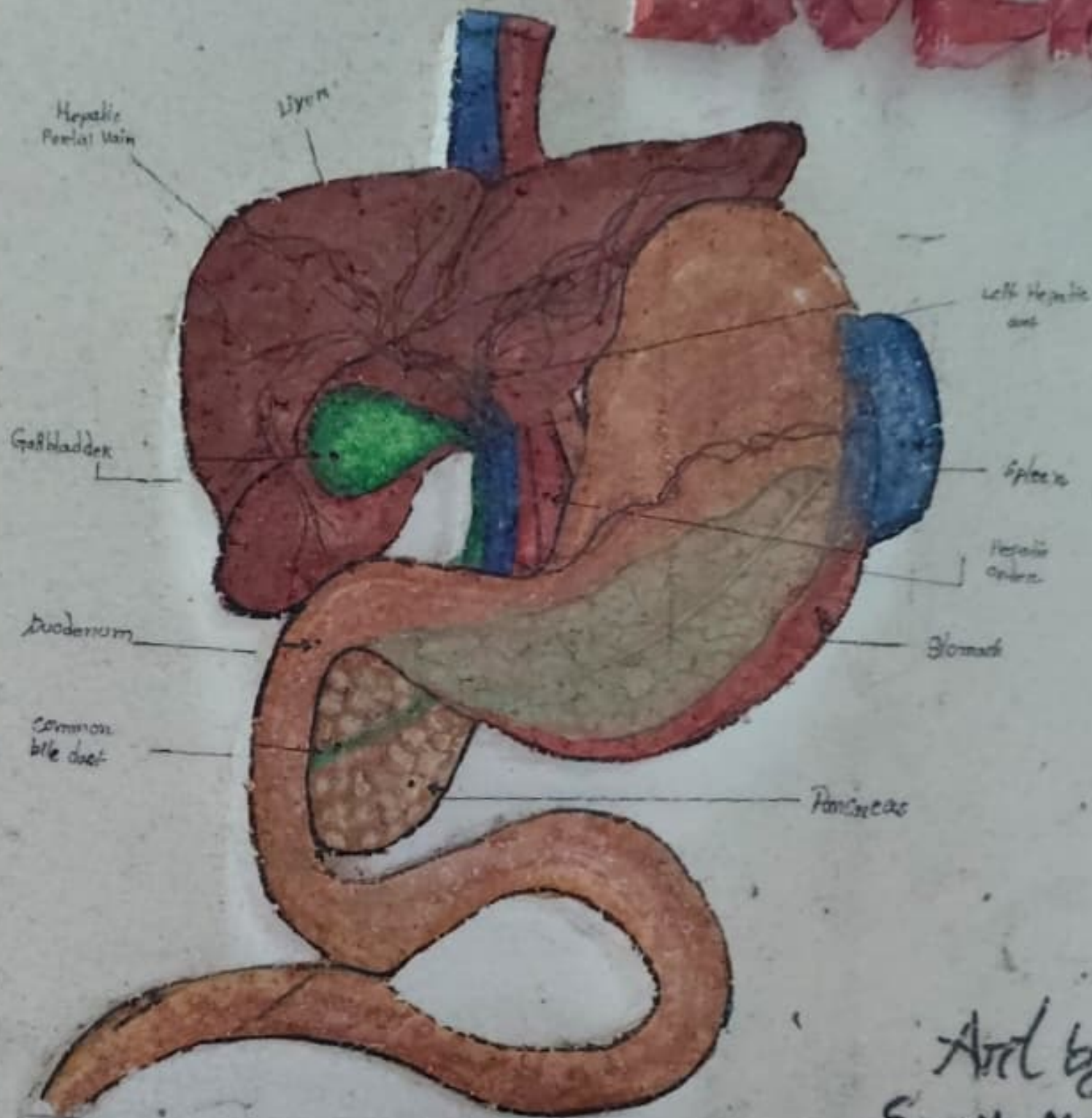
Left atrium

Left ventricle

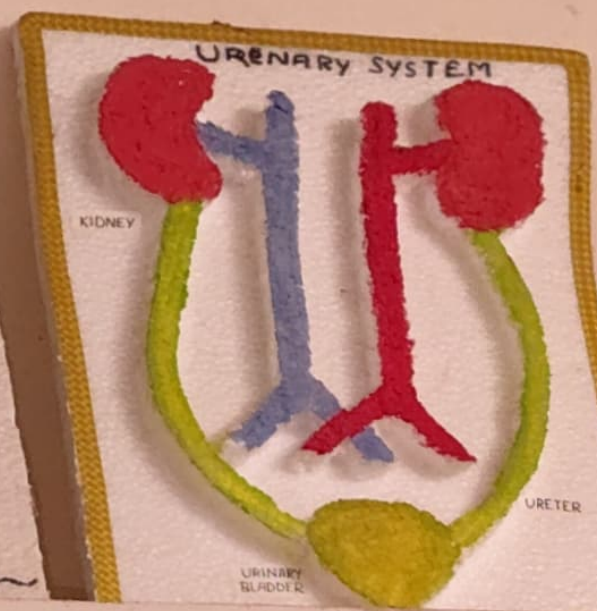
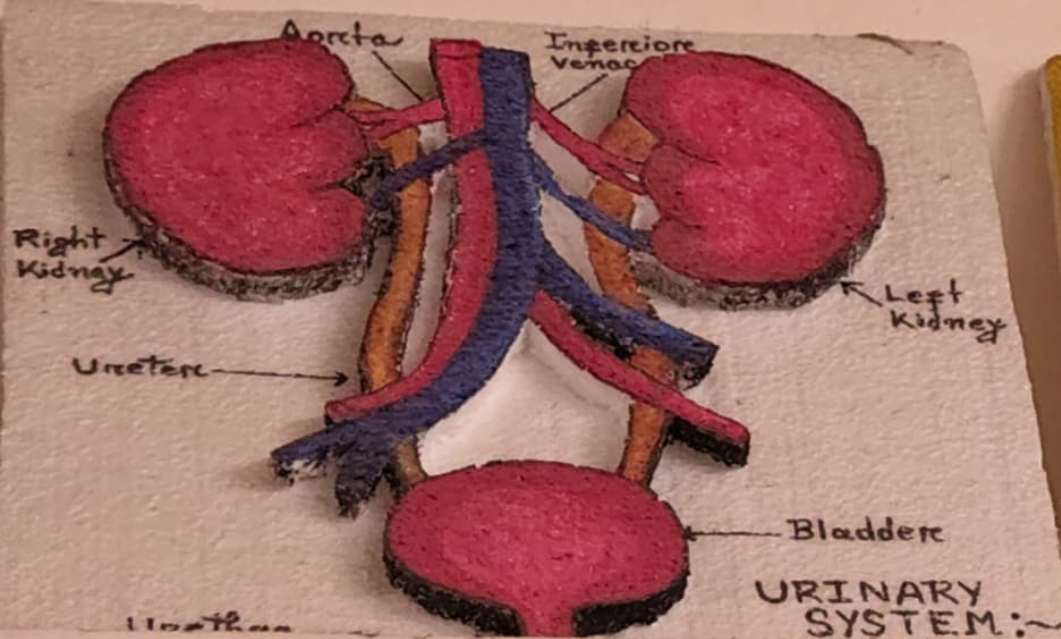
Septum

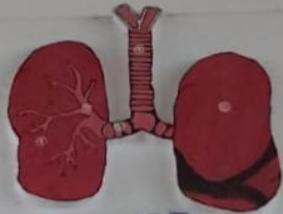
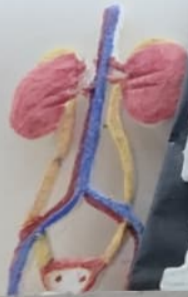
NARGIS
PARVIN

LIVER



Art by
Sangeeta Malhotra





LUNGS

1. Trachea
2. Bronchi
3. Bronchioles
4. Alveoli

EPIDERMIS

HAIR SHAFT

NERVE

DERMA

HEAT GLAND

HYPODERIS

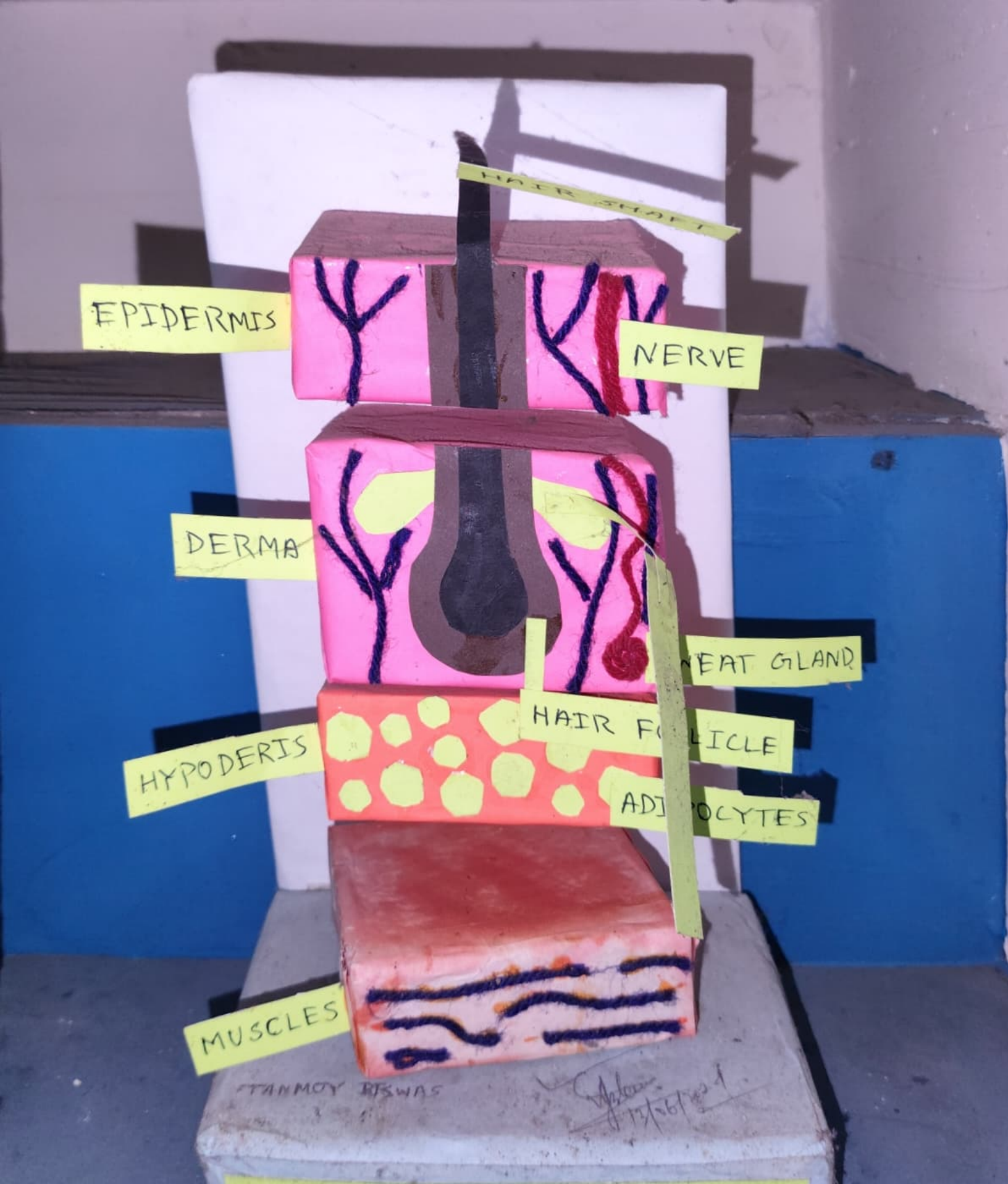
HAIR FOLLICLE

ADIPOCYTES

MUSCLES

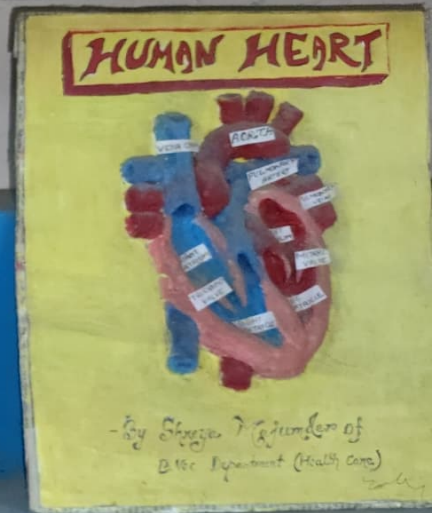
TANMOY BISWAS

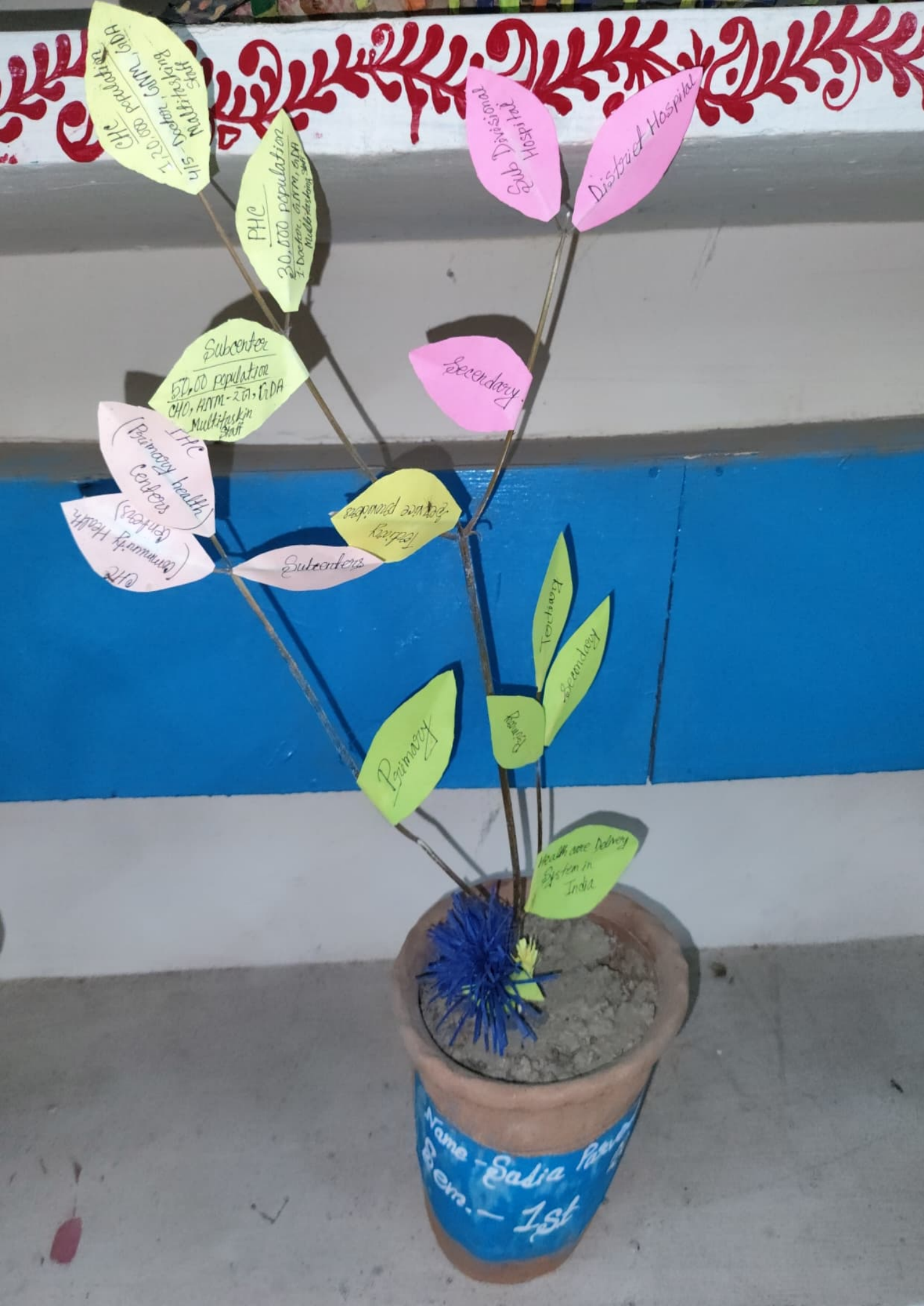
15/06/2024





Tanushree
Chowdhury





CHC
120,000 population
4-5 Doctors, G.M., G.D.A
Multi-tasking staff

PHC
20,000 population
1 Doctor, G.M., G.D.A
Multi-tasking staff

Subcenter
50,000 population
CHC, A.M., G.D.A
Multi-tasking staff

PHC
(Primary health
Centers)
(Community Health
Centers)

Feeding
-between providers

Subcenters

Primary

Rural

Health care delivery
System in
India

Secondary

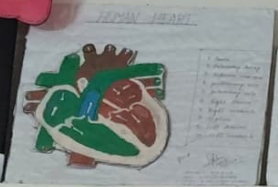
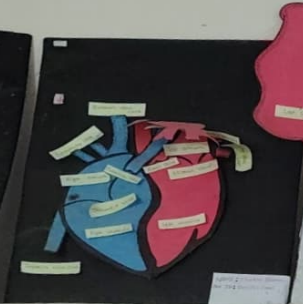
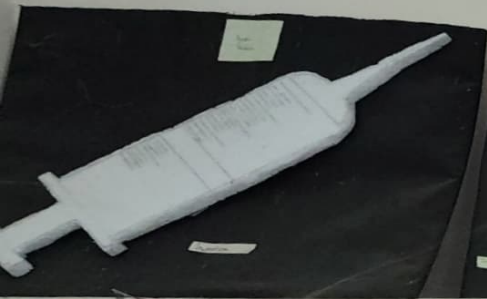
Tertiary

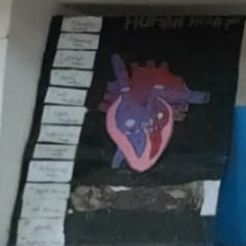
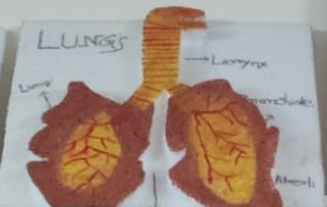
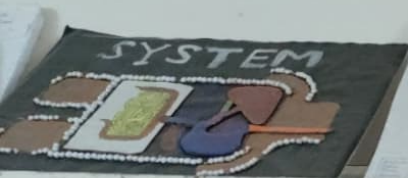
Secondary

Sub-Divisional
Hospital

District Hospital

Name - Sabia Par...
Sem. - 1st





CIRCULATORY SYSTEM

